


BioPoly™ RS

Knee System



Cartilage Friendly
Rapidly Pain Free
Immediate Weight Bearing
Improved Quality of Life
Outpatient Procedure
Proven Materials
Increased Mobility
Bone/Soft Tissue Sparing
Reduced Rehabilitation
More Patient Referrals



Less Invasive
Reduced Surgical Time
Outpatient Procedure
Fewer Surgical Steps
Arthroscopically Assisted
Reduced Rehabilitation Time

Improved Quality and Reduced Costs
for Superior “Value Based” Outcomes.™

Superior Quality / Cost Effective

Utilizing a patented process, BioPoly combines two proven orthopaedic materials (UHMWPE biologically enhanced with Hyaluronic Acid) to create an advanced self-lubricating orthopaedic biomaterial with exceptional wear properties and sufficient strength to support anatomical loading.

The BioPoly™ RS device eliminates the need for costly biological treatments or joint replacement, by replacing painful localized focal osteochondral defects in the weight bearing region of medial and/or lateral femoral condyles.

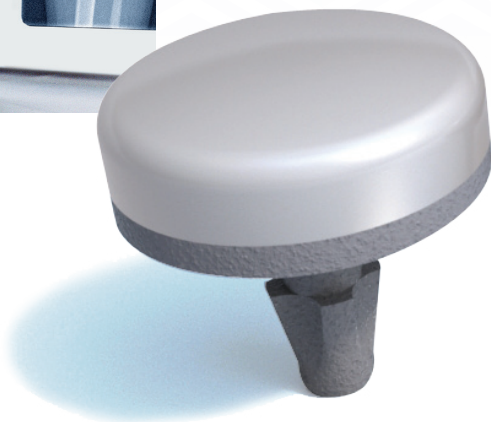


Surgical Procedure

Familiar Technique

Using Mini-Arthrotomy Approach

1. Assess defect
 - Size
 - Depth
 - Bone / Cartilage quality
 - Device location
2. Prepare site
3. Trial
5. Insert
6. Close



BioPoly®

Advancing Materials. Advancing Outcomes.

BioPolyOrtho.com