

What are the alternative treatments?

- **Cheilectomy**
Shaving of bone spurs, may be performed at the same time as a BioPoly surgery.
 - **Other Hemiarthroplasty**
Other implants use metal, and wear away cartilage on the opposite bone faster than BioPoly+.
 - **Total Toe Replacement**
Both sides of the toe joint are replaced.
 - **Fusion**
The bones in the joint are held together with plates and screws so that they grow together.
- ⁺Based on BioPoly testing



Advancing Materials. Advancing Outcomes.™

This product is covered by US Patent Nos. 7,662,954, 9,216,085, 9,265,611, 9,526,619, 10,405,982, 10,575,954, and other patents pending. Copyright 2023 BioPoly LLC. All rights reserved. BioPoly® is a registered trademark of BioPoly LLC. Printed in the USA.

Manufactured By:
BioPoly LLC, a Schwartz Biomedical Company
7136 Gettysburg Pike, Fort Wayne, IN 46804, USA
Phone 260.999.6135 | www.BioPolyortho.com

BioPoly Great Toe & Lesser Toe

Do you deal with Pain or Limited Movement in your toes?



Patient Information

The BioPoly Implant can be used for:

- **Arthritis/Freiberg Disease**
Is your toe painful, stiff, swollen, unstable, clicking, and/or locking?
- **Hallux Rigidus/Limitus**
Is your Great Toe uncomfortable, swollen, and / or stiff?
- **Cartilage Defects in the Great Toe**
Does your toe bone (metatarsal head) have a cartilage defect?

How does the implant work?

The BioPoly Implant replaces the diseased end of the bone (metatarsal) in the joint of your toes, leaving the opposing bone in the joint (proximal phalanx) intact. So, by replacing the diseased, painful tissue with a BioPoly Great or Lesser Toe Implant, the pain in the joint can be alleviated and the motion of the joint restored.

What is the implant made of?

The BioPoly Implant contains a unique material (BioPoly) that combines a common plastic for implants (UHMWPE), with a lubricating molecule (Hyaluronic Acid) native to the joint. This allows the material to act like the cartilage it's replacing, rebuilding the joint surface. This material is molded onto a Titanium stem that provides support and helps fix the implant in bone.

What if the implant needs replaced later?

The BioPoly Implant only resurfaces the end of the metatarsal bone. It can be revised by total toe replacement or fusion

Are you a potential patient?

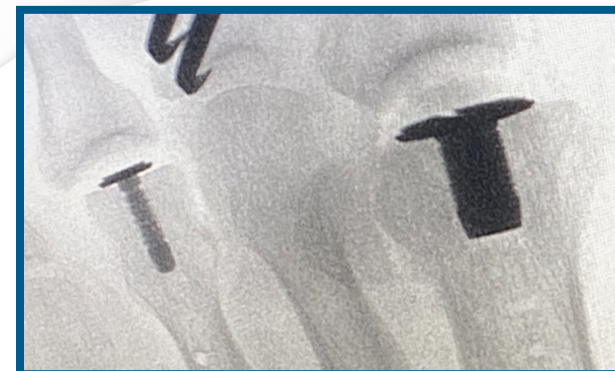
- Do you want to be able to bend your toe again?
- Do you want to wear your normal shoes/heels?
- Do you want to try to prevent a future total toe replacement/fusion?

BioPoly

Slides against the cartilage on the opposite side of the joint

Titanium

Attaches implant to the bone.



X-Ray with BioPoly Implants

For more information:
Visit: www.biopolyortho.com